

CY-090型耐热抗振压力开关传感器

CY-090 Thermal Vibration-Proof Pressure Switch Sensor

1.工作原理

CY-090型耐热抗振压力开关传感器是采用波纹管作为弹性敏感元件，当弹性敏感元件受到压力作用时，其中心产生一定位移，随着压力的变化，传动机构传递这个位移并带动动触点移动。当压力达到设定值时，动触点与静触点闭合，电路接通；当压力小于设定值时，动触点与静触点断开，电路切断，从而实现压力的控制和报警。

2.特点

具有动作压力点范围、耐高温、抗振性能好、体积小、可靠性高、抗恶劣环境等特点。

3.应用范围

该传感器不但可以用于发动机润滑系统的压力控制，还可以广泛应用于大、中型采油机、船用设备、电站、机车及空调设备等各种需要进行压力控制的场合。

4.外形结构尺寸

该传感器是敏感探头与信号调节器构成，其外形尺寸如图所示。

1.Working Principle

The elastic sensitive element of CY – 090 thermal vibration-proof pressure switch sensor is corrugated pipe, When elastic sensitive element under pressure, its center will have certain displacement, as the change of stress, transmission mechanism transfer displacement and drive movement of contact. When the pressure reach the set value, moving contact and the static contact are closed, circuit is connected; When pressure is bigger than setting, the moving contact and the static contact disconnected, the circuit is cut off, so as to realize pressure control and alarm.

Characteristic

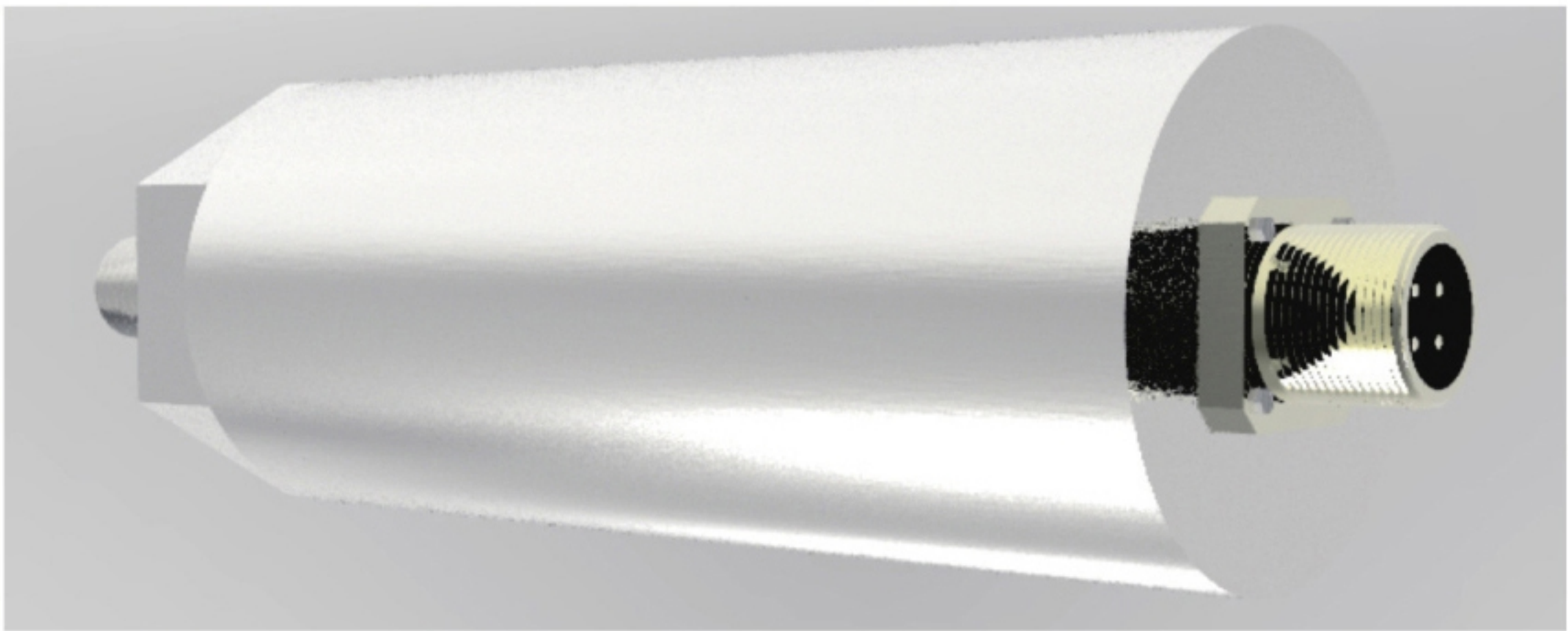
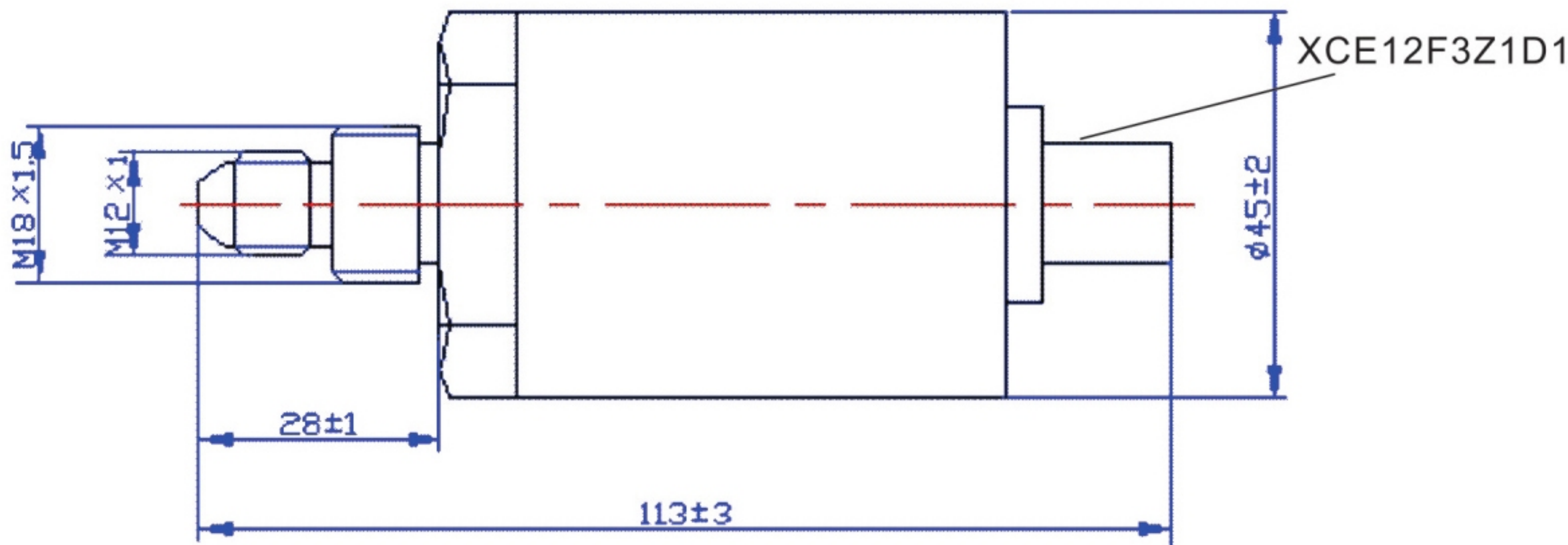
It has characteristics of high temperature resistant, anti-vibration, small volume, high reliability, anti harsh environment and so on.

Application

The sensor can be used for not only pressure control in the engine lubrication system, but also in large and medium-sized production machine, Marine equipment, power station, locomotive, and air conditioning equipment such as various occasions.

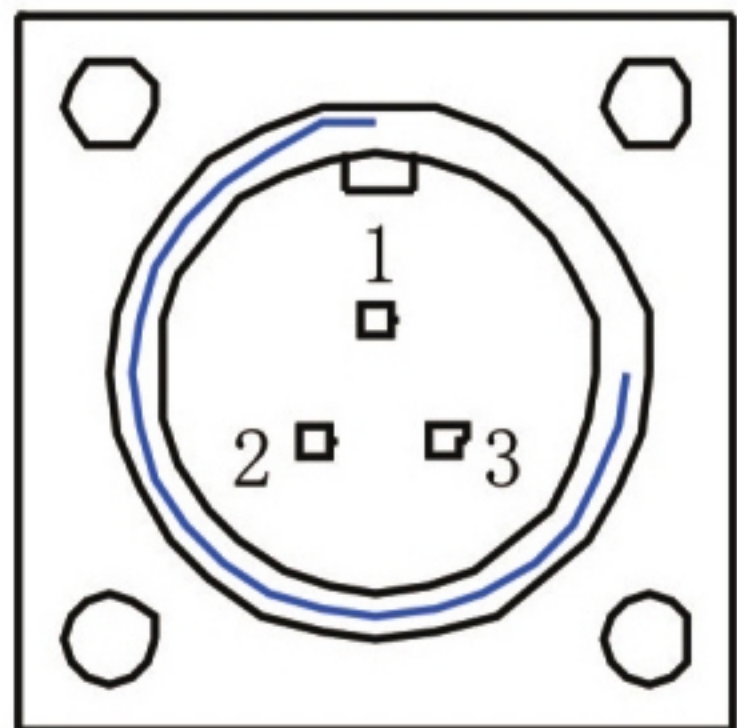
4. Outside dimension

This sensor is made up of sensitive probe and signal conditioner, please check outside dimension in figure 1.



5.电气连接方式 Electrical connection

传感器的电气连接方式如图所示。



1.电源正； 2.电源负； 3.空
1—positive power； 2—negative power； 3—null；